



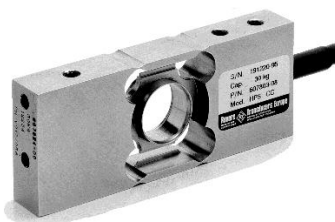
Revere Transducers make many families of load cells of different capacities and accuracies including versions of some of these load cells with direct digital RS485 or RS422 output. If this short-form guide does not include models to suit your specific requirements, please contact us for further information.



SSB single ended shear beam fully welded stainless steel load cell. Suitable for platform, pallet, overhead track & process weighing. Waterblock cable entry for use in harsh environments. Hermetically sealed, IP66/68. EEx(i) versions are available for use in hazardous areas. Current Calibration output (SC version) ensures easy and accurate parallel connection of multiple load cells.
Capacities 500 to 5,000 kg. Combined error 0.0500 to 0.0200%.



RLC ring torsion, low profile fully welded stainless steel load cell. Suitable for small to medium platform scales and process weighing. Glass-to-metal cable entry for use in harsh environments. Hermetically sealed, IP66/68. 1100 ohm bridge impedance. EEx(i) versions are available for use in hazardous areas. Multi-interval and multiple-range versions are available.
Capacities 500 to 5,000 kg. Combined error 0.0230 to 0.0115%.



HPS single point fully welded stainless steel load cell. Suitable for low capacity platforms, multi-head packaging machines, check weighers, loss-in-weight feeders, belt scales and general weighing. Moment insensitive, platform size to 350 x 350mm. Unique construction for use in harsh environments. Hermetically sealed, IP66/68. EEx(i) versions are available for use in hazardous areas.
Capacities 6 to 60 kg. Combined error 0.0500 to 0.0200%.



ACB bending beam load cell fully welded low profile stainless steel. For platform and hybrid scales, pallet weighers & process weighing. Waterblock cable entry for use in harsh environments. Hermetically sealed, IP66/68. EEx(i) versions are available for use in hazardous areas. 1000 ohm bridge impedance. Current Calibration output (SC version) for multiple load cells.
Capacities 500 to 5,000 kg. Combined error 0.0500 to 0.0170%.



CSP-M compression load cell, multi-column, low profile stainless steel with unique design for excellent insensitivity to eccentric loads. Suitable for truck and rail scales, and process weighing. Leak-tested welded construction for use in harsh environments. Hermetically sealed, IP66/68. EEx(i) and EEx(d) versions for use in hazardous areas. Current Calibration output (SC version) for multiple load cells.
Capacities 5 to 100 t. Combined error 0.0500 to 0.0200%.



BSP S-type stainless steel compression or tension load cell. For hybrid, overhead track and belt scales, and process weighing. Fully welded & waterblock cable entry for harsh environment use. Hermetically sealed, IP66/68. Integrated overload stop (in 50 to 500 kg capacities). EEx(i) versions are available for use in hazardous areas. Current Calibration output (SC version) for multiple load cells.
Capacities 50 to 5,000 kg. Combined error 0.0500 to 0.0200%.



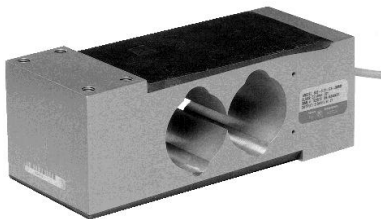
Load cell mounting accessories are available. Accuracy Classes are according to OIML R-60 CC, C1, C2, C3, C3MR, C4, C5, C6. PTB Me-30 accuracy classes are also available for CSP-M and SSB types. Correct mounting and cabling is essential for optimum performance. Please request further information, and any model data sheets.



5103/9103 double ended centre loaded shear beam load cell. Suitable for tank and axle weighing, and low cost truck scales. Reliable sealing and mechanical protection of the strain gauge area. Sealed to IP67 (DIN 40.050). Nickel plated (5103) and stainless steel (9103) versions. Low profile construction. Optional mounting hardware is available.
Capacities 5 to 250 Klbs. Combined error 0.1000 to 0.0300%.



5123/9123 single ended stainless steel / nickel plated beam load cell. For platform, overhead track & hopper scales, & process weighing. Reliable sealing and mechanical protection of the strain gauge area. Sealed to IP67 (EN 60.529). Threaded load hole for levelling feet, load buttons or loading cables. Trimmed output and Current Calibration (SC) versions.
Capacities 500 to 5,000 kg (1 Klbs to 10 Klbs also available). Combined error 0.1000 to 0.0200%.



652 single point moment insensitive aluminium load cell. Suitable for a wide range of medium capacity platform scales, packaging machinery and general purpose weighing applications. Full sealing for use in a variety of industrial areas. Moment insensitive, platform size 900 x 900mm. Double epoxy sealing protection for damp environments. Industry standard mounting configuration.
Capacities 50 to 1,000 kg. Combined error 0.0500 to 0.0200%.



9363/363 universal S-type stainless steel / nickel plated load cell. Suitable for hybrid, belt scale, overhead track and process weighing. Trimmed output versions for use of multiple load cells in parallel. Multi-purpose load cells for use in tension or compression. Reliable sealing and mechanical protection of the strain gauge area. Low cost economical load cells for simple mounting arrangements.
Capacities 50 to 10,000 kg (100 lbs to 20 Klbs also available). Combined error 0.0500 to 0.0200%.



SHBxR bending beam fully welded stainless steel load cell. Suitable for low capacity platform scales, packaging machines, hybrid scales and process weighing applications. Waterblock cable entry for use in harsh environments. Hermetically sealed, IP66/68. EEx(i) versions for use in hazardous areas. Current Calibration output (SC version) for multiple load cells.
Capacities 5 to 200 kg. Combined error 0.0500 to 0.0170%.



For Data Sheets, Application Notes, Load Cell Transmitters and Indicators, **Aircraft Weighing Systems** and other process control products, please contact